

We are a community
Loving God, Serving others and Flourishing together



NEWSLETTER



ENRICHING JOYFUL ENERGETIC





Headteacher's Message

As we move into May, it's been wonderful to see the school in full swing, with longer days and brighter weather bringing a renewed sense of energy to our learning environment. The children have continued to demonstrate enthusiasm, resilience, and a real pride in their work, both inside and outside the classroom.

This half term is always a busy and important one, particularly for our Year 6 pupils as they prepare for their SATs. We are incredibly proud of their hard work and determination, and we know they will approach the tests with confidence and positivity. Thank you to parents and carers for your continued support at home—it makes a significant difference.

Across the school, there have already been some fantastic learning opportunities, trips, and enrichment activities, with more to come in the weeks ahead. These experiences play such an important role in broadening children's understanding and creating lasting memories.

As always, we encourage regular attendance and punctuality to ensure every child can make the most of these opportunities. Please also keep an eye out for upcoming events and key dates as we head towards the end of the academic year.

Thank you for your ongoing support of our school community.

Wishing you all a lovely May.

Mr Bright



**APRIL
EDITION**

Notices



Playground Safety Reminder

To help us keep all children safe, we kindly ask parents and carers to leave the playground promptly after dropping and picking up scooters and bikes at the start and the end of the day.

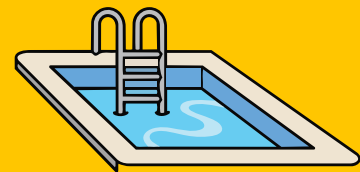
While we understand it can be a lovely opportunity to chat while children play, we need to ensure the space is clear and ask that **children do not use the play equipment** during these times.

The equipment is only insured for use during the school day when appropriate supervision is in place.

Thank you for your understanding and support in helping us keep everyone safe.



Swimming Pool Update



Contractor works are still continuing, yet we are happy to announce that the main works have now been completed.

In addition to reinstating the pool as it was, we are currently sourcing quotes for new resin flooring – something S&PA have been fundraising for over a number of years.

We look forward to updating you on progress next month.

Nurture & Little Oaks Marble Shop rewards



May we kindly ask for any small toy donations, if you are having a spring clean at home.



We would love to receive any unwanted small pocket toys e.g. soft toys, squishes, foam squishes, notebooks and colouring pens.



Much appreciated and thanks from Mrs Biles & Mrs Powell.



 **Punctuality at the Start and End of the School Day**

We would like to remind all parents and carers of the importance of **punctuality** at both the **beginning and end** of the school day. Arriving on time each morning ensures that children are settled, ready to learn, and do not miss important instructions or early learning opportunities. If your child arrives after the gate has closed, they must report to the school office to be signed in.

At the end of the day, **prompt collection** is equally important. The school day finishes at 3pm (2.55pm for EYFS) and we ask that all children are collected on time.

Please be aware that if your child is **not collected by 3:15pm**, they will be taken to our after-school club. In this instance, **a late collection fee of £18.50 will be charged.**

We understand that occasional, unavoidable delays may happen; however, consistent lateness can be distressing for children and impacts staff responsibilities.

Thank you for your support in ensuring a smooth and positive start and end to each school day.

APRIL
EDITION

Staffing changes for September



At the end of the school year, we will be saying a fond farewell to Mr Lasbury and Miss Mowlam, who are both moving on to exciting new opportunities closer to their homes. We thank them for all they have given to our school community and wish them every success in the future.

Following a successful recruitment process, we are delighted to be welcoming new members to our teaching team:

Miss E Bowles,
Miss E Martin and
Miss A Smith.

We look forward to them becoming part of our school family.



BCP Travel Plan

BCP Council are collaborating with local schools to encourage increased active travel to school.

One of the key initiatives is the development of a School Travel Plan (STP). Having an STP in place can provide significant benefits, including establishing clear accountability for achieving travel-related goals and enhancing the safety of students outside the school.

Included below are the School Travel Survey Links. Please do take part so BCP can begin gathering data, the surveys will close on 22 May. The survey results will help inform the completion of your School Travel Plan.

Parent/ Carer Travel Survey: **[Project: St Mark's School Parent Travel Survey | BCP Council](#)**

National Walk to School Week

We are excited to be taking part in National Walk to School Week this year, running from 18-22 May: Walk to School Week is an initiative run by [Living Streets](#).

Our families are encouraged to walk, wheel, cycle, scoot or Park and Stride to school every day of the week. The children can track their progress on a brightly coloured wallchart in class and earn stickers as they go along.



Pupil Premium, Service Children and Free School Meals Funding – Why It Matters

At our school, we are committed to making sure every child has the support they need to thrive, both academically and emotionally. One of the ways we are able to do this is through additional government funding linked to eligibility for Pupil Premium, Service Children funding, and Free School Meals (FSM).

These funding streams make a significant difference to what we can offer in school, including extra support for learning, wellbeing interventions, pastoral care, enrichment opportunities, and targeted academic support.

Free School Meals & Pupil Premium

If your child is eligible for Free School Meals, the school also receives Pupil Premium funding. Importantly, even if your child is in Key Stage 1 and already receives universal free meals, checking eligibility is still essential, as it can unlock additional funding for the school.



Eligibility is not only based on current income, but may include families who receive certain benefits. We strongly encourage all families to apply if they think they may qualify, as even small changes in circumstances can make a difference.



Apply here!

Service Children

We also receive additional funding for children who have a parent serving in the armed forces, or who has served in the past. This is known as Service Pupil Premium. This funding helps us support children who may experience periods of separation, mobility, or additional emotional needs linked to military life. If your child has a parent serving or who has served, please let us know so we can ensure they are correctly registered.



Why your application is so important

Every eligible child who is registered helps increase the funding the school receives. This funding is used directly to benefit pupils, including:

- Additional classroom support
 - Targeted intervention groups
 - Mental health and wellbeing support
 - Subsidised trips and enrichment activities
 - Extra pastoral support where needed
- How to apply or check eligibility

Applying is quick and confidential. If you are unsure whether you qualify, we would still encourage you to check. Our office team can help support you with the process if needed.

Thank you for helping us ensure we can access the full funding available to support all our children.



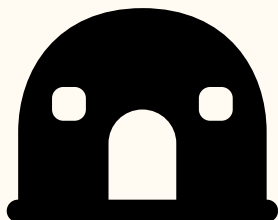
St. Mark's Day

St Mark's Day was joyfully celebrated at St Mark's School with a day full of reflection, community, and fun. The celebrations began in the morning with a special church service led by Rev Nick, where pupils and staff came together to honour the school's patron saint. The service provided a meaningful opportunity for everyone to reflect on the values of kindness, faith, and togetherness that St Mark represents, creating a calm and thoughtful start to the day.



In the afternoon, the celebrations took a more light-hearted turn as an ice cream van arrived on the playground, much to the delight of both children and staff. The excitement was clear as everyone enjoyed a well-earned treat in the sunshine, sharing smiles and laughter with friends. It was a wonderful way to bring the school community together, marking St Mark's Day with both reflection and celebration.





Year 4 take a step back in time

Year 4 had a truly memorable and enriching experience during their recent visit to the WW2 bunker at Talbot Heath School. As part of their history learning, pupils were given the unique opportunity to step back in time, dress as an evacuee and explore a real-life setting from the Second World War.



During the visit, the children learned about what life was like during wartime, including how the bunker was used to keep people safe during air raids. They were fascinated by the authentic features and equipment, which helped bring their classroom learning to life in a meaningful and engaging way. The experience encouraged thoughtful questions and sparked curiosity about the past.



The trip was not only educational but also inspiring, helping pupils to deepen their understanding of history while developing a real appreciation for the resilience and courage shown during that time.

Year 4 represented the school beautifully, showing enthusiasm, respect, and excellent behaviour throughout the visit.





Year 1's special visitor

Year 1 were delighted when Miss Neal's friendly Golden Retriever, Arlo, visited the playground as part of their learning linked to the book '**Pig the Pug**' by Aaron Blabey. The visit helped the children make real-life connections to the story and provided inspiration for their writing.

The children showed wonderful care and gentleness as they met Arlo the dog. They learned how to approach and interact safely with animals, asked thoughtful questions, and discussed how Arlo's calm behaviour compared with the character of Pig in the story. These discussions supported their writing, helping the children describe a dog using adjectives and link their ideas back to the text.

It was a memorable experience that supported both wellbeing and learning in a meaningful way.





Admissions 2026–2027

Reception Places 2026–2027 – We Need Your Support



We are looking ahead to our Reception intake for September 2026–2027 and would really value your support. Like many schools across the country, we are seeing the impact of a significantly lower birth rate, which means there are still a number of places to fill in our upcoming Reception cohort.

Our school is a welcoming, nurturing environment where children are supported to flourish, grow in confidence, and develop a love of learning from the very start of their journey. We are incredibly proud of what we offer and would love to welcome more families into our community.

If you know of any friends, neighbours, or family members who are still looking for a Reception place for September, we would be grateful if you could recommend our school and encourage them to get in touch with us.



We are always happy to arrange visits and answer any questions prospective parents may have. Thank you, as always, for your continued support.



BCP SEND

The SEND Team continues to review the volume of enquiries coming into the service, to ensure they are able to communicate with families and settings as effectively and promptly as possible.

As part of this work, they are introducing some new systems to help improve how enquiries are managed and responded to. To support this, they have developed a SEND Enquiry Form:

[SEND Enquiry Form](#)

The purpose of the form is to ensure that parents/carers and settings are quickly signposted to the most appropriate information and that enquiries are directed to the correct team from the outset, supporting a 'tell us once' approach.

They anticipate this will help them provide more consistent and timely responses, reduce frustration for families, and manage demand more effectively. All emails into the service will receive an auto response with the link to the enquiry form as well as other information.

We would be grateful for your support in trialling this new approach and in encouraging parents and carers to use the SEND Enquiry Form when they need to contact the SEND service directly.

Thank you in advance for your support and understanding as they introduce this new way of working.



E-Safety Corner

Popular Apps and Games - A Handout for Parents

Drawn from the **Ofcom Online Nation Report 2025** this free handy guide for parents and carers looks at the more popular apps and games used by children and young people. Specifically it covers: Key insights. A comparison of safety and wellbeing features within apps and games. Help and support links for those games and apps (e.g. Family Pairing, YouTube Supervised Experience etc.). A few of the more popular helplines. App/games reviews from Common Sense Media. Download: **Popular Apps and Games - A Guide for Parents.**



Shopping Scams

Every year hundreds of thousands of people here in the UK fall victim to fraud when buying something online. GetSafeOnline has a plethora of information to help with this such as:



Information on purchase scams **HERE.**

Online buying tips **HERE.**

Scam website checker **HERE.**

One piece of advice I couldn't see on either of these pages is related to the legitimacy of the company. Particularly on social media such as Instagram I will often see ads for things like clothing and gifts which look interesting and unique. When I click on the ad to take a closer look I will always tap on the 3 dots on the top right and tap on "open in external browser." The reason for this is that if it is a company I'm not aware of, I want to know the details of the company before I purchase. Often when I go onto the website there are no company details, no contact details (apart from a web form), and either no reviews or perfect reviews. These are all red flags to me and I would never purchase from such a site.

**APRIL
EDITION**

Spirituality and Community



Our Vision: We believe that by **Loving God** and Serving others, we can all fulfil our potential in Flourishing together.



This term we have been thinking about how we can “Encourage on another and build each other up”.

We’ve thought about...

- **The teamwork needed for the Artemis II mission to be a success.**
- **How St Peter used his words to share with others the life and miracles of Jesus, to encourage early Christians.**
- **How words can encourage (but also hurt) others and how we have to be careful how we use words.**
- **How we can encourage others linked to St Mark’s Gospel.**



Our Summer 1 term worship theme is

“Encourage one another and build each other up.”

1 Thessalonians 5:11

Mr Bright's Wednesday half **WOW** -er of Wonderful Work



Theo S - For amazing phonics work using split digraphs.



100
%



We still have Reception places available!

for September

ST. MARKS

Join us on Instagram

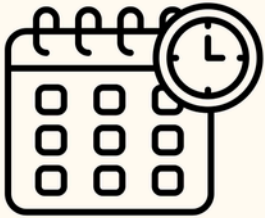
NEWS

info

updates



ST_MARKS_PRIMARY_BOURNEMOUTH



Term Dates 2026–2027

Autumn term: 1 September to 18 December 2026

Inset Days: 1, 2, 3 & 28 September, 27 November 2026

Autumn half term holiday: 26 October to 30 October

Christmas holiday: 21 December to 3 January

Spring term: 4 January to 25 March 2027

Inset Days: 4 January, 26 February

Spring half term holiday: 15 February to 19 February

Easter holiday: 26 March to 11 April

Summer term: 12 April to 21 July 2027

Inset Days: 18 & 21 June

Summer half term holiday: 31 May to 4 June

Summer holiday: from 22 July



PANIC! FOR THE DISCOS

If we don't get more trustees
and volunteers, we won't
be able to run the school discos.

S&PA newsletter

April/May



Summer Fair

The Summer Fair is fast approaching but we still really need volunteers to make it work! If you can help for 1hr15 on the day, our event will run smoothly and you'll still get to enjoy half of it.

Please take 2 minutes to fill in the form below and let us know what you can do.

Thank you so much. The S&PA committee cannot do this without you, and we are grateful for every single person who puts their name forward.

<https://tinyurl.com/ssummer-fair-26>

We need help. Now.

No more volunteers = no more discos

The S&PA currently has three trustees. That's not enough to keep things running - and if nothing changes, we'll have to start cancelling events. Freeze Fridays go first. Then discos from September. Then, eventually, the fundraising that's helping pay for the swimming pool renovation and new play equipment.

It doesn't have to be that way

We need people to sign up to be a trustee or a volunteer. But we're not asking a lot - no commitment to every meeting. No expectation to take on a formal role (unless you'd like to). Just a small group of people around each event, making sure it happens and making sure our children have the memories - and the facilities - they deserve.

Parents at this school have always shown up for each other. This is simply the next chance to do that. You don't have to do everything. Just pick one event you'd be happy to help with - that's all we're asking.

- ✂ Discos
- 🎪 Summer Fair
- 🎄 Christmas Fair
- 🧊 Freeze Fridays



Email stmarkssandpa@hotmail.co.uk or find Kayleigh, Laura or Mark at the school gates. It's a two-minute conversation, not a lifetime commitment, and it will make a genuine difference to every child at this school.



PLEASE BRING EAR
DEFENDERS IF REQUIRED

Hawaiian Disco

WED 1ST JULY

R,1,2 disco 4 - 5pm

3,4,5 disco 5.15 - 6.15pm

School Hall



Tickets
£3.50

Please bring a water bottle
Squash available to refill water bottles
A packet of sweets will be given
to the children at the end of the disco
Purchase tickets via our S&PA online portal

Sponsored scoot, skate & cycle



SAVE
the DATE



HELLO May

FRIDAY

1st May

9:00am - 12:00pm

5CS Bournemouth Uni Drama Workshop in School

9:00am - 12:00pm

6CP Bournemouth Uni Drama Workshop in School

MONDAY

4th May

All Day

May Day Bank Holiday (School Closed)

FRIDAY

8th May

9:00am - 12:00pm

5CS Bournemouth Uni Drama Workshop in School

MONDAY

11th May

9:00am

Year 6 SATs Week

TUESDAY

12th May

All Day

Year 6 SATs Week

TUESDAY

12th May

All Day

Year 6 SATs Week

WEDNESDAY

13th May

All Day

Year 6 SATs Week

THURSDAY

14th May

Until 3:00pm

Year 6 SATs Week

FRIDAY

15th May

All Day

Year 5 - Winchester Science Museum

WEDNESDAY

20th May

2:30pm - 3:00pm

3JW Class Worship to Parents

THURSDAY

21st May

All Day

Year 5 - Victorian Day

FRIDAY

22nd May

All Day

School breaks up for half term holiday - normal finish time

9:30am - 3:00pm

Reception Farmer Palmers Trip

MONDAY

25th May

All Day

Half term holiday

TUESDAY

26th May

All Day

Half term holiday

WEDNESDAY

27th May

All Day

Half term holiday

THURSDAY

28th May

All Day

Half term holiday

FRIDAY

29th May

All Day

Half term holiday

RECEPTION SCHOOL MEET-UPS

at Lollipops Café



Join us for a relaxed, friendly space to connect, share experiences, and make new friends!



APRIL

- Mon 27 - St Peter's Catholic School
- Wed 29 - Heatherlands Primary School
- Thurs 30 - Stourfield Infant School



MAY

- Wed 6 - Courthill Infant School
- Thurs 7 - Lilliput C of E Infant School
- Mon 11 - Longfleet Primary School
- Wed 13 - St Marks C of E Bournemouth
- Thurs 14 - Winton Primary School
- Mon 18 - Avonwood Primary School
- Wed 20 - Talbot Primary School
- Thurs 21 - Parley First School

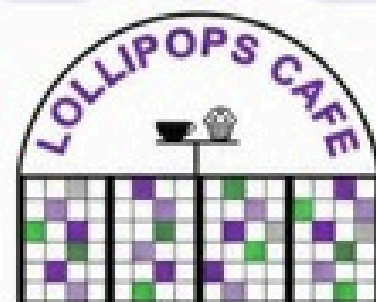


JUNE

- Mon 1 - Bishop Aldhelms School
- Wed 3 - Muscliff Primary School
- Thurs 4 - The Epiphany School
- Mon 8 - Queens Park Academy
- Wed 10 - St Michael's C of E



BOOK ONLINE
to reserve your spot!



Parties - Soft Play - Classes

www.lollipopscafe.com (events)

ST★RS

— HOLIDAY CLUB —



MAY HALF TERM

TUESDAY 26TH – FRIDAY 29TH MAY



VENUES:



Kingsleigh Primary School

Hadow Road, BH10 5HT

KPS discount available

Sibling discount available

Stars Member discount available

£20

PER CHILD



Multi-Activity Holiday

Club for children aged 4-13

Activities include:



Football



Dodgeball



Dance



Arts & Crafts



Gymnastics



And many more!



Inflatable Fun

BOOK VIA CLASS MANAGER

OR CONTACT



kirsty@starscorportaeltd.co.uk





MAY HALF TERM ACTIVITY TIMETABLE



DAY

ACTIVITIES

Tuesday 26th May	<ul style="list-style-type: none"> • Football Matches • Arts & Crafts 	<ul style="list-style-type: none"> • Team Building Games • Multi-Sports 	<ul style="list-style-type: none"> • Inflatable Fun • Gymnastics
Wednesday 27th May	<ul style="list-style-type: none"> • Warm-Up Games • Football Skills & Drills 	<ul style="list-style-type: none"> • Creative Crafts • Obstacle Course Challenges 	<ul style="list-style-type: none"> • Playground Games (Tag, Capture the Flag) • Just Dance
Thursday 28th May	<ul style="list-style-type: none"> • Multi-Sports Tournament • Arts & Crafts 	<ul style="list-style-type: none"> • Penalty Shootout Competition • Team Games (Relays, Races) 	<ul style="list-style-type: none"> • Inflatable Fun • Gymnastics
Friday 29th May	<ul style="list-style-type: none"> • Warm-Up Games • Football Tournament 	<ul style="list-style-type: none"> • Tennis Activities • Arts & Crafts 	<ul style="list-style-type: none"> • Music & Party Games • End of Week Celebration



ACTIVITIES ARE SUBJECT TO CHANGE AND MAY VARY DUE TO WEATHER OR CIRCUMSTANCES OUT OF OUR CONTROL



BALLARD

RESPOKE EDUCATION



"Simply the best school everyday." (Parent)

Book now for our final Open Morning of the academic year.

Friday, 8th May

Meet our new Headmaster, Mr Stewart Turner, take a tour with some of our pupils, and see first-hand what makes Ballard multi-award-winning.

Now taking registrations for our Year 7 Admissions Day for 2027 Entry



Call 01425 626 900 or email: registrar@ballardschool.co.uk



FF Foundation Sports & Play May Half-term Sports & Play Camps!

Tax-free childcare, childcare vouchers and childcare grants accepted

Our Team

Enhanced DBS Checked, Staff on the Update Service, Qualified in Sports & Childcare, SEND Trained, First Aid Trained & Safeguarding Children Trained. We are always putting the children's welfare first!

Venues

Stourfield Junior School, BH6 5JG
BCS Preparatory School, BH14 9JY
The Epiphany School, BH9 3PE
Castle Court School, BH21 3RF
Christchurch Infant School, BH23 2AE
We are open for both Inset Days for Christchurch families

Ages

3 - 12 years old. 3 year olds only able to book on at BCS & Castle Court.

Activities

Our engaging programs have 3 areas of play: Sport (football, gymnastics) Play (board games, lego, outdoor exploration) and Craft (art, masks & biscuit decorating). We have activities for every child's interests.

Time

9.00am - 3.00pm with early drop off available from 8.00am & late pick-up times for 4.30pm & 5.30pm.

Dates

Fri 22nd May - Mon 1st June. Dates vary by location. We will not be open on bank holiday. Please check your specific venue for exact dates.



**From
£27.50 Per
Day**

**Ofsted
Registered
Provider**

**Tax-free
Childcare &
Vouchers**

Bookings & Contact

Click : www.foundation-play.com

or scan the QR code to the right.

E: dorset@foundation-sports.com

IG: @fsportsandplay | FB: Foundation

Sports & Play Dorset

Phone: 01202 007785



SCAN ME



Schedule Example

For up-to-date information on daily venue activities, please check in with us. Below is an example of our scheduled holiday club activities.



Morning Schedule

08:00 - 08:45: Early sign-ins arrive! Our leaders will have activities set up ready to start the day before the majority of children arrive on camp.

08:45 - 09:15: The main arrival time. Sign-ins and warm-up with free play. Children can enjoy a variety of activities, including toys, sports equipment, and creative crafts to start the day.

09:15 - 09:30: Group circle time. All children will gather round for circle time as we introduce the exciting activities planned for the day ahead.

09:30 - 11:00: Sports carousel outside and a creative workshop inside. There will be a carousel of sports activities, allowing your child to freely explore a variety of games. Indoors, they'll dive into painting, drawing, and hands-on crafting projects. While outside children can enjoy our forest school areas, play on the trial equipment, build bug hotels & collect resources from nature to use in arts and crafts sessions

11:00 - 11:15: Snack Break! Refuel with snacks to keep energy levels high for the next batch of activities.

11:15 - 12:15: Your child will have the choice to participate in age-group matches such as football, dodgeball, and cricket, with alternative sports activities like gymnastics and dance also available.

Alternatively, there will be indoor biscuit decorating and themed crafting station, like making summer buntings, daisy chains and friendship bracelets.

Lunchtime & Afternoon

12:15 - 12:45: Lunchtime! Those who have paid for hot lunches will enjoy a warm meal with their friends. Lunches are made either on site by a chef or local restaurant.

12:45 - 13:15: We will continue the fun with outdoor play in the playground and outside gyms.

13:15 - 14:45: Your child will spend the afternoon choosing to join in with Nerf battles, gymnastics or showcasing their talents in a fun and interactive group talent show. We'll then head into a forest exploration adventure and finish off the week on Friday with a WATER FIGHT!

End Of Day & Late Afternoon



15:00: All children will gather together for our closing ceremony where children will receive certificates and enjoy music, ending the day on a high note as parents arrive for collection.

15.00 - 17.30: Those who are booked into late collection will have a variety of mainly child-led activities to help them wind down before collection. Snacks are provided for those staying late.

Childcare Vouchers & Tax-free Childcare:

Ofsted Registration Number: 2652421 Please use your child's first initial & surname as a reference when paying with vouchers.



Dorset
Council





Upton
Country Park

ALIEN DESIGN COMPETITION



Open to all
ages, groups
and
individuals

COMPETITION RULES

Help Upton Country Park design their Halloween 2026 Trail characters. We are looking for unique and creative alien designs for our four alien characters – Astra, Estelle, Izar and Dara. Design just one or all four with the winning designs chosen by the Upton Country Park Team and used in our Halloween 2026 trail out in the Country Park!

Submissions to be returned no
later than

JULY 17 2026



For completed submissions please email these to uptoncountrypark@bcpcouncil.gov.uk or post them to The Visitor Services Team at Upton Country Park, Poole Road, Poole BH17 7BJ

MAY HALF TERM

EXCLUSIVE GIRLS

TUESDAY MAY 26TH
THURSDAY MAY 28TH

BOOK THROUGH WHATTSAPP OR EMAIL
SEE POST DESCRIPTION BELOW



CAMPS

MAY HALF TERM 2026

BOOKINGS OFFICIALLY OPEN FOR
THE BELOW DATES



TUESDAY	26 TH
WEDNESDAY	27 TH
THURSDAY	28 TH
FRIDAY	29 TH

BOOK - INFO@GENERATIONELITE.CO.UK